

The background of the slide is a photograph of a complex wooden roof structure. It features a dense network of light-colored wooden beams, trusses, and rafters, creating a geometric pattern. The lighting is bright, highlighting the natural grain of the wood. The structure appears to be part of a large, modern building.

**Impulsvortrag  
Haus des Holzes 25.09.2025**

# Tragwerke in Holz

Jürg Stauffer, [juerg.stauffer@neueholzbau.ch](mailto:juerg.stauffer@neueholzbau.ch)  
Projektentwicklung  
Ingenieur HTL (SISH Biel 1997)



Pandrama Konstanz | Photo: Helmut Scham - Internet

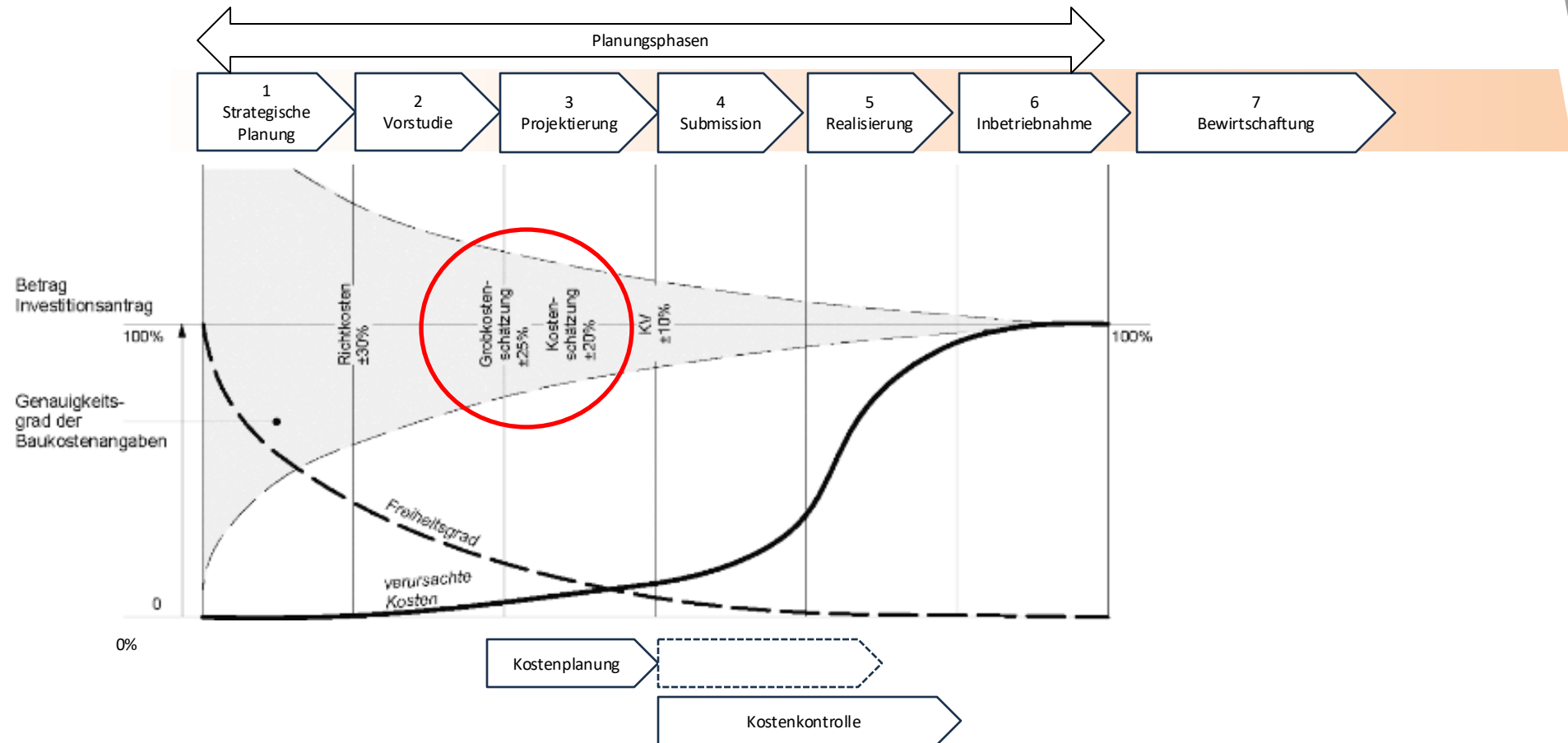


Trainingshalle Davos | Photo: Internet

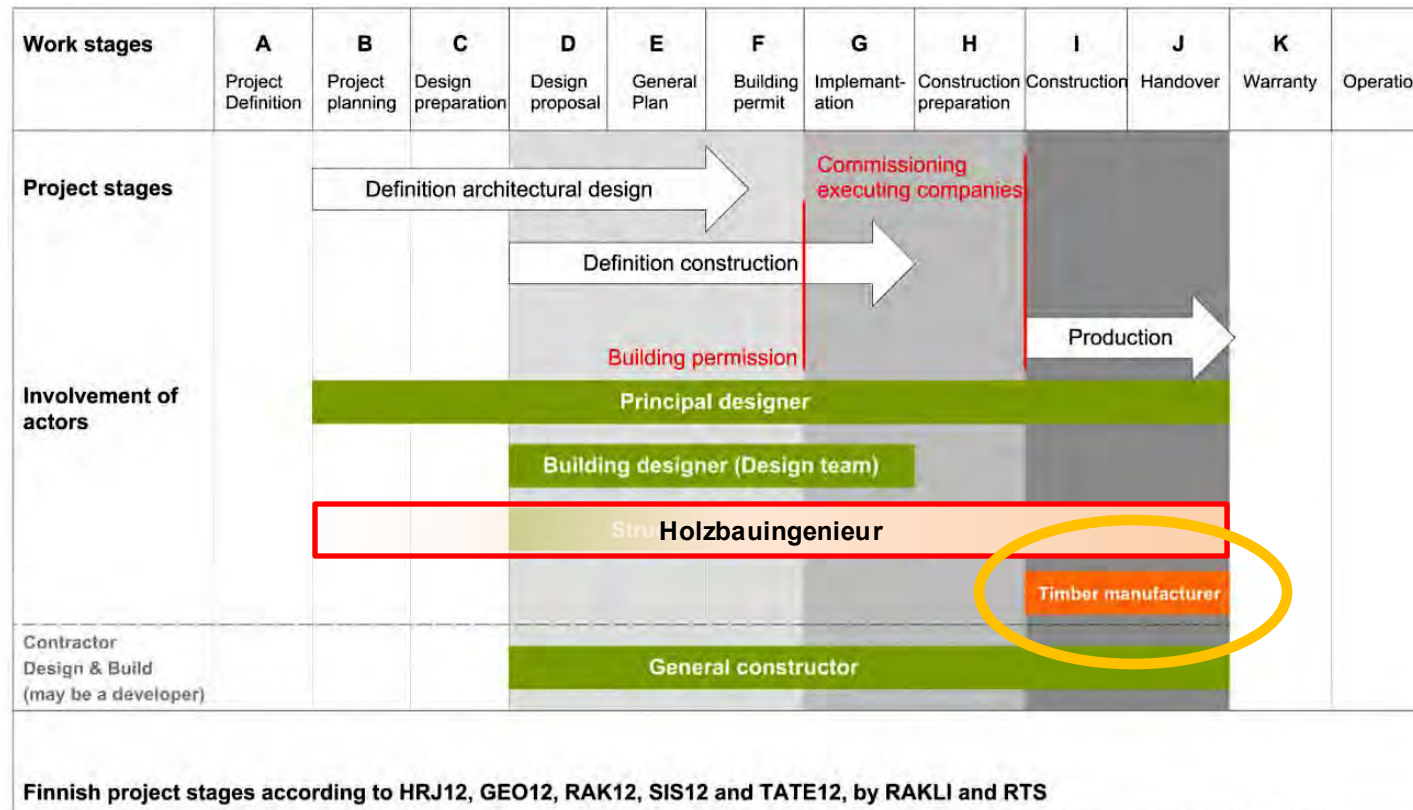


Pembroke College | Photo: Fred Howarth, London

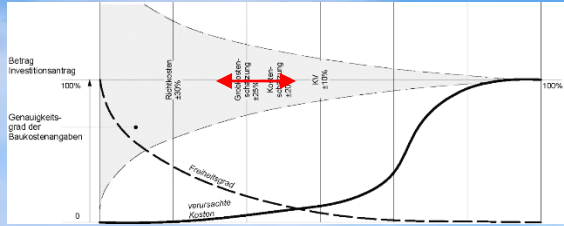
# Planungsphasen und deren Auswirkungen



# Planungsprozesse und Verantwortlichkeiten

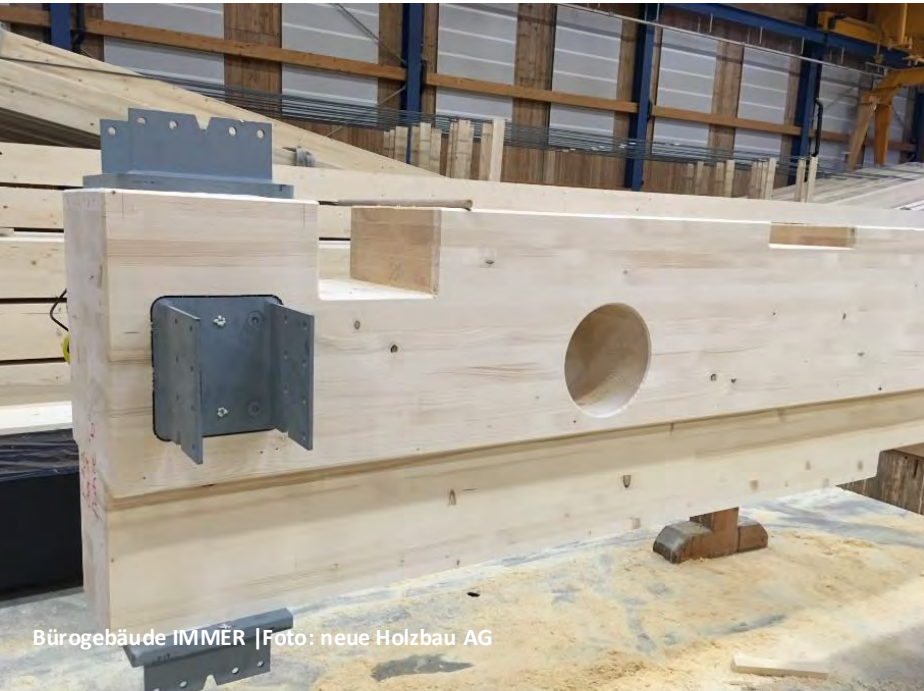


**Abbildung 5: Finnische Projektphasen auf Basis der RAKLI/RTS Tehtävälueetelo 2012 Definitions.**  
 Quelle: le Roux, Simon (Aalto University).

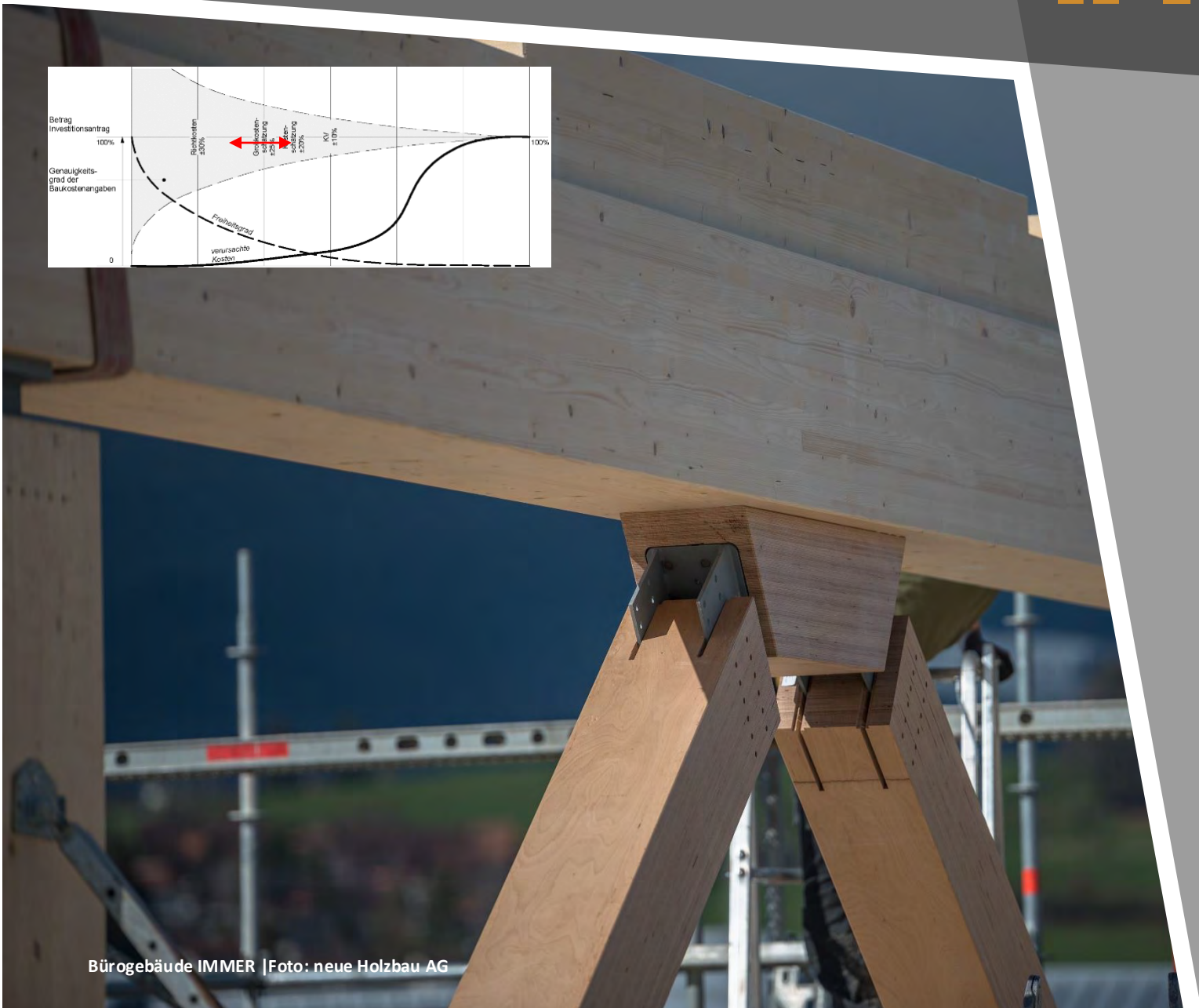




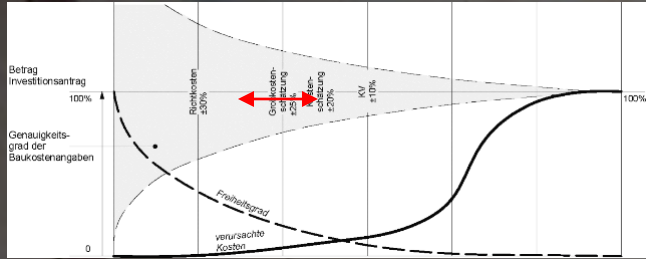
ANO | Foto: neue Holzbau AG



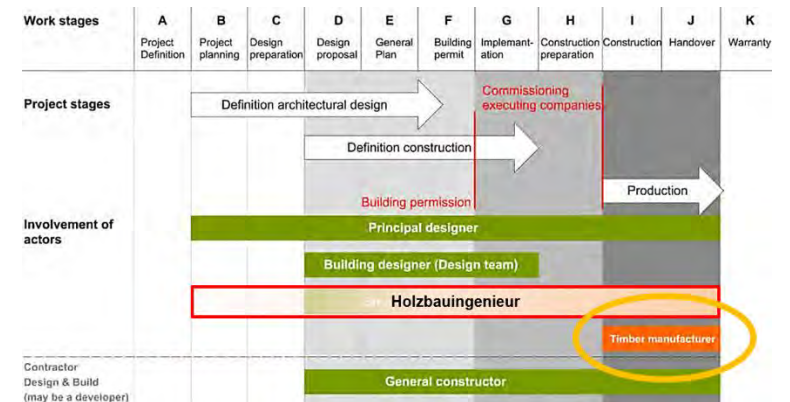
Bürogebäude IMMER | Foto: neue Holzbau AG

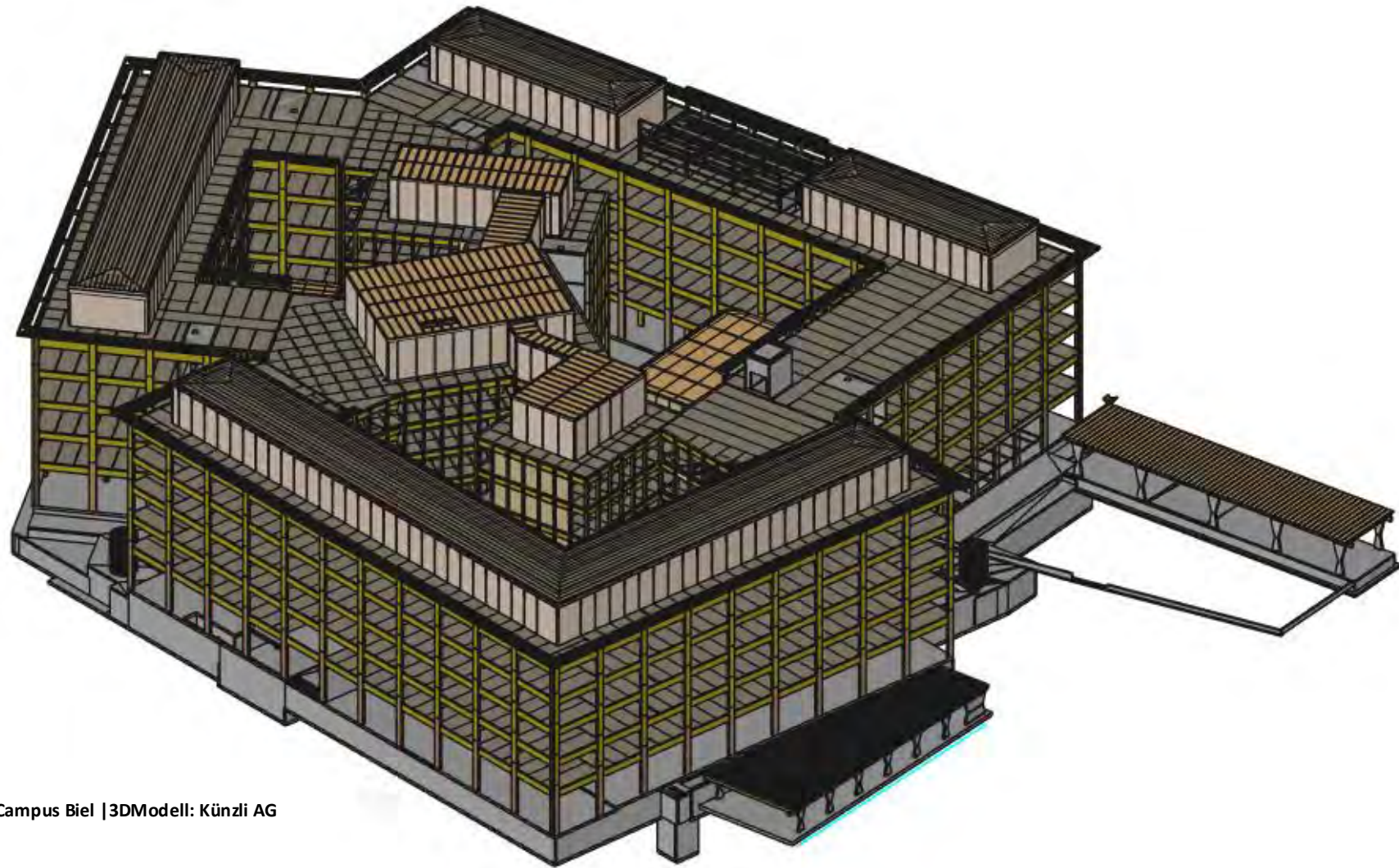


Bürogebäude IMMER | Foto: neue Holzbau AG









Campus Biel | 3DModell: Künzli AG



Campus Biel | Fotos: n'H AG



Zu beachten sind:

- 1. Planungsphasen*
- 2. Holzbauingenieur*
- 3. Planungsaufwand*
- 4. Termingerechte Vergabe*



